

Highlights of Analytical Chemistry in Switzerland

Micro-scale Chemical Speciation of Highly Heterogeneous Cementitious Materials Using Synchrotron-based X-Ray Absorption Spectroscopy

André M. Scheidegger*, Marika Vespa, Erich Wieland, Messaoud Harfouche, Daniel Grolimund, Rainer Dähn, Andreas Jenni, and Karen Scrivener

*Correspondence: PD Dr. A.M. Scheidegger, Laboratory for Waste Management, Paul Scherrer Institute, CH-5232 Villigen PSI
Tel.: +41 56 310 2184, Fax: +41 56 310 4554, E-Mail: Andre.Scheidegger@psi.ch

Keywords: Cement · Micro-scale chemical speciation · Micro-X-ray absorption spectroscopy · Micro-X-ray fluorescence · Radioactive waste · Swiss Light Source

Mixing 'fugitive' hazardous waste products into a cementitious binder system improves the stabilization and the solidification of radioactive and industrial waste materials. Consequently, the migration of radionuclides and other heavy metals from cement-based landfills and nuclear underground waste repositories into the environment can be significantly retarded and possible impacts on the environmental quality can be minimized. From a chemical standpoint cement minerals are typically present as discrete particles in the size range of a few nanometers to a few hundred micrometers (Fig. 1). The complexity of the hydrated assemblage and the reactivity of the minerals make it very difficult to investigate cementitious systems.

Molecular-level investigations on Co(II) doped hardened cement paste were carried out at the Advanced Light Source (ALS) using synchrotron-based micro-X-ray fluorescence (XRF) and micro-X-ray absorption spectroscopy (XAS). XAS is exclusive to synchrotron light sources and can yield spatially-resolved information (e.g. type of neighboring atoms, bond length and coordination numbers) on the variability of chemical speciation in complex and highly hetero-

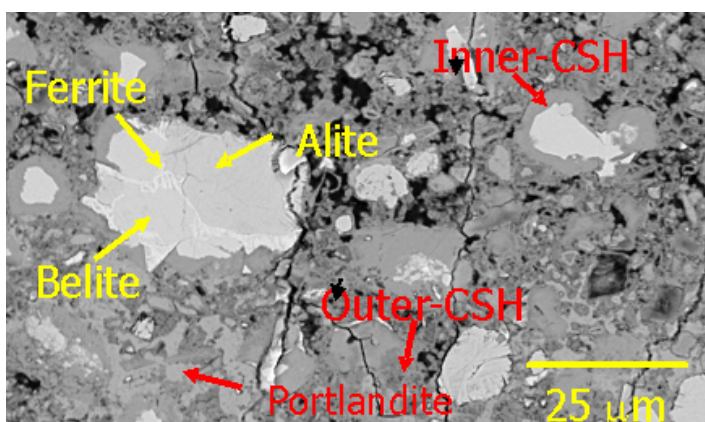


Fig. 1. SEM image illustrating the micro-scale heterogeneity of hardened cement paste. Examples of clinker minerals (ferrite, belite and alite; yellow) and hydrated phases (calcium silicate hydrates (CSH) and portlandite; red) are outlined.

geneous samples. A hard X-ray micro-probe facility optimized for micro-XRF and micro-XAS with a spatial resolution of a few μm^2 has now also become available at the Swiss Light Source (SLS).

The micro-XRF maps show that Co is heterogeneously distributed in the Co-doped cement matrix (Fig. 2). Typically Co-rich spots up to $\sim 50 \mu\text{m}^2$ in size (e.g. spot 1) as well as characteristic Co-rich ring-like structures with diameters up to $\sim 200 \mu\text{m}$ (e.g. spot 2) were observed. XAS data analysis revealed the presence of a Co(II)-hydroxide-like phase ($\text{Co}(\text{OH})_2$ and/or Co-Al layered double hydroxide) at spot 1 and a Co(III)OOH-like phase at spot 2. This finding is illustrated by the shorter Co-O and Co-Co distances at spot 2 (Fig. 3).

Co oxidation is environmentally relevant since it results in a reduction of the Co mobility in cement. A surprising result of the micro-spectroscopic study is that oxidation of Co(II) is a locally occurring process. **This finding demonstrates that the inherent micro-scale heterogeneity of cement may well control the overall chemical reactivity of Co in cement.**

Received: January 26, 2006

References

Website of the microXAS at SLS: <http://sls.web.psi.ch/view.php/beam-lines/mxas/index.html>.

M. Vespa, R. Dähn, D. Grolimund, M. Harfouche, E. Wieland, A.M. Scheidegger, *J. Geochem. Exploration* **2006**, in press.

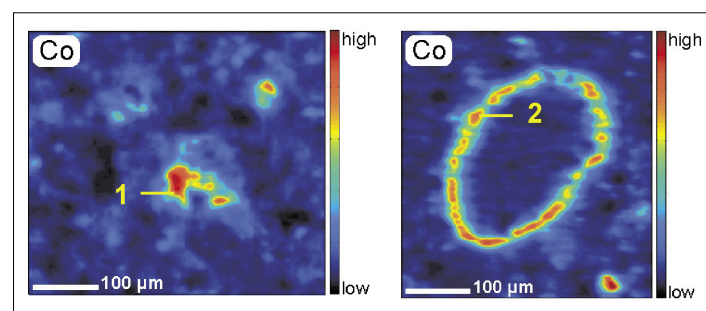


Fig. 2. Micro-XRF maps showing the elemental Co distribution in a hydrated Co-doped hardened cement paste at different locations (beam size $\sim 5 \times 5 \mu\text{m}^2$)

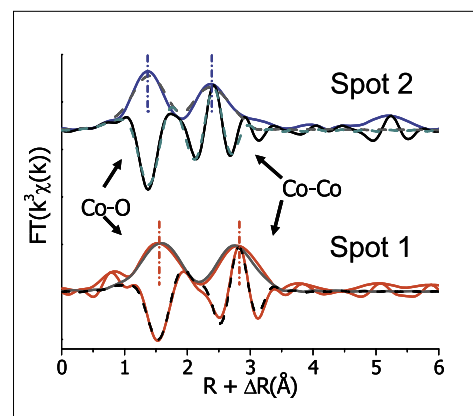


Fig. 3. Experimental (solid line) and theoretical (dashed line) Fourier transforms (modulus and imaginary parts) of k^3 -weighted micro-EXAFS spectra collected at spot 1 and 2. The spectra are uncorrected for phase shift ($R + \Delta R$).

Can you show us your analytical highlight?

Please contact: Dr. Veronika R. Meyer, EMPA St.Gallen, Lerchenfeldstrasse 5, 9014 St.Gallen
Phone: 071 274 77 87, Fax: 071 274 77 88, Mail to: veronika.meyer@empa.ch